

RMX-1/0 Neoprene Moulded Connector

The **RMX** Neoprene Moulded connector is a new addition to the RM* series, which has a long established pedigree in deep ocean and harsh environment applications, and was specifically designed for a tidal energy application.

The RM* products are all-UK manufactured and can be specifically tailored to a customer need. The time proven rubber moulding process allows for a highly cost effective solution to many underwater instrumentation applications.

The range comprises in-line male and female connectors with stainless steel or brass mating bulkheads, with other material options available on request.

Rated to 7,100m, these connectors can be supplied terminated to any length of cable and is currently available with a single contact.



Key Features and Benefits (RMX-1/0)

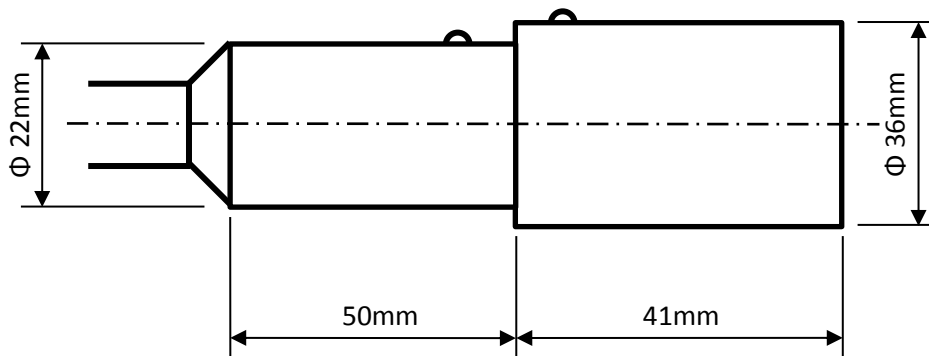
- Supplied terminated to 120mm² single core cable as standard, alternative options available on request
- Standard rating up to 400A @ 750V d.c.
- Standard and reverse gender configurations for connectors or bulkheads
- Bulkhead mounting variants and conductor tails to suit individual requirements
- Right angled and multi-way breakout moulding options
- All in-house, UK manufacture for fast response, low cost bespoke versions

Standard Specifications :-

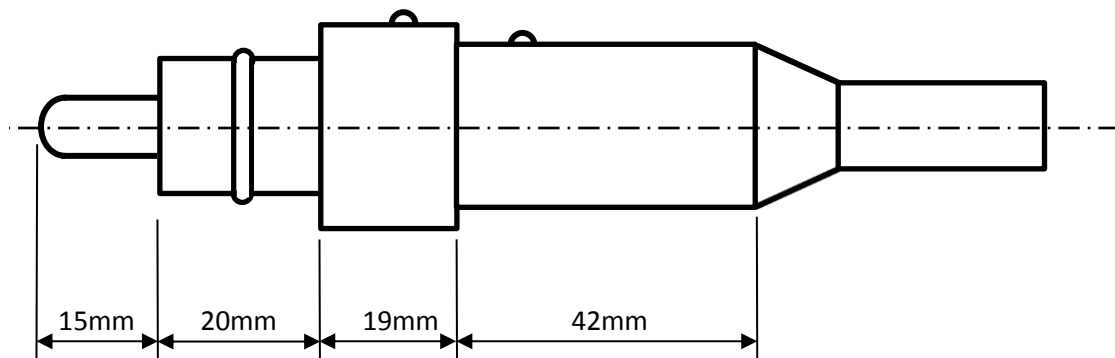
Temperature :	-40 °C to 60°C	Bulkhead Body :	Stainless 316L
Contact IR :	>999MΩ @ 1,000Vdc	Connector Body :	Chloroprene Rubber
Mated Depth :	7,100m	Contacts :	Brass UNS – C36000
Locking Collar :	Delrin or Stainless Steel	O Rings :	Nitrile N170

RMX-1/0 In-line Connector Nominal Dimensions

RMX-1/0-FS



RMX-1/0-MP

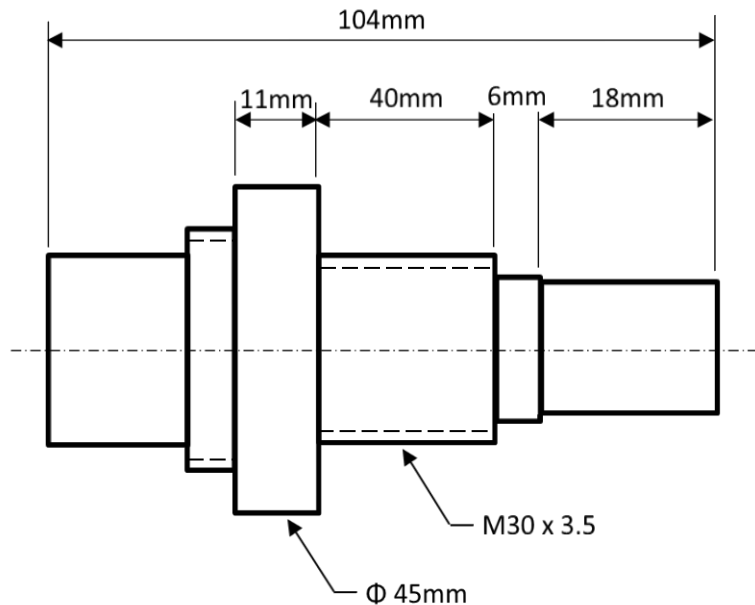


Notes :-

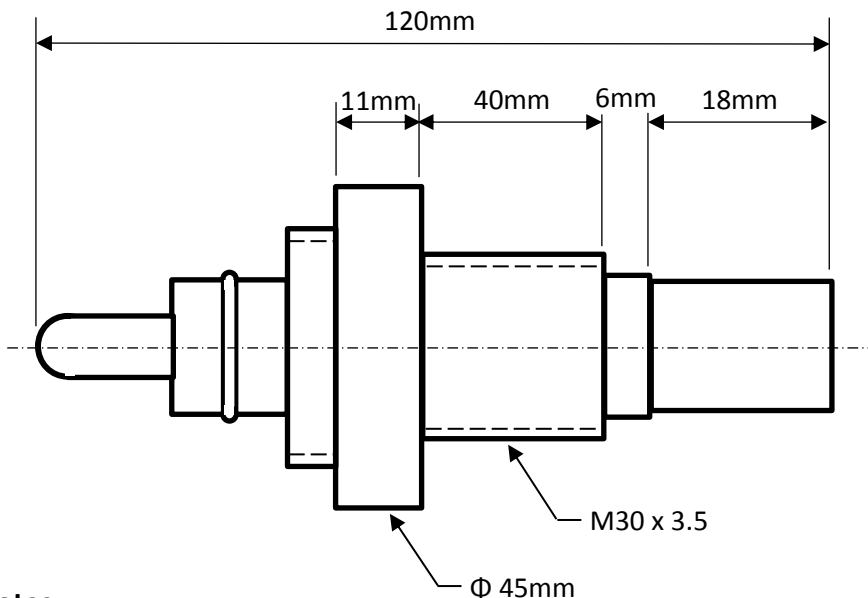
- Cable length specified by customer
- Male and Female Locking sleeves and Dummy Connectors or Dust Caps supplied on request

RMX-1/0 Bulkhead Nominal Dimensions

XSX-1/0-FS



XSX-1/0-MP



Notes :-

- Stainless steel body as standard, other options available
- Mounting thread (M30x3.5, 40mm long as standard) to suit requirement
- Can be supplied with suitable cable tails on request

STSubsea products are being used in a wide variety of marine and harsh environments, including:-

- Subsea instrumentation, sensors, and control systems
- Autonomous and remotely operated surface and underwater vehicles
- Downhole instrumentation and logging systems
- Military Communication and Control systems
- Meteorological Buoy systems
- Military Sonar systems
- Land and Marine Seismic equipment
- Offshore renewable energy projects

These products are derived from a range of key strengths, capabilities and industry experience:-

- Specialised, bespoke connectors and cables for underwater or harsh environments
- Complete prototyping service, from design to manufacture to electrical and pressure testing.
- Design of electrical, optical, coax /RF, Ethernet or hybrid connectors from unique one-offs to volume applications
- Cost effective, shallow water products
- Incorporating proven, commercially available interconnects into subsea capable solutions
- On-site moulding service and an over-moulding material capability for Polyurethane, Neoprene and Polyethylene components
- Through-hull penetrators, glass-to-metal seals and epoxy waterblocks
- Ceramic transducers and hydrophones
- Potting and encapsulation of switches, sensors, strain gauges and PCBs
- Long established, MetOcean range of metal shell, drymate connectors

